

MONTHLY MEMBERSHIP PROGRESS REPORT

LOCATION INDIA

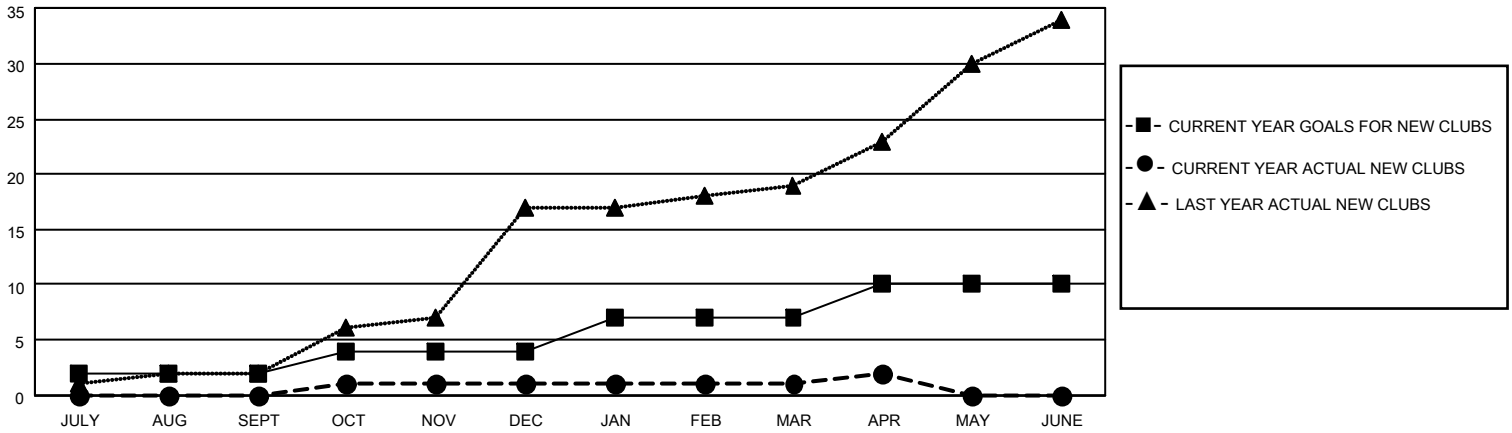
District 317 C

Results as of: 4/30/2022

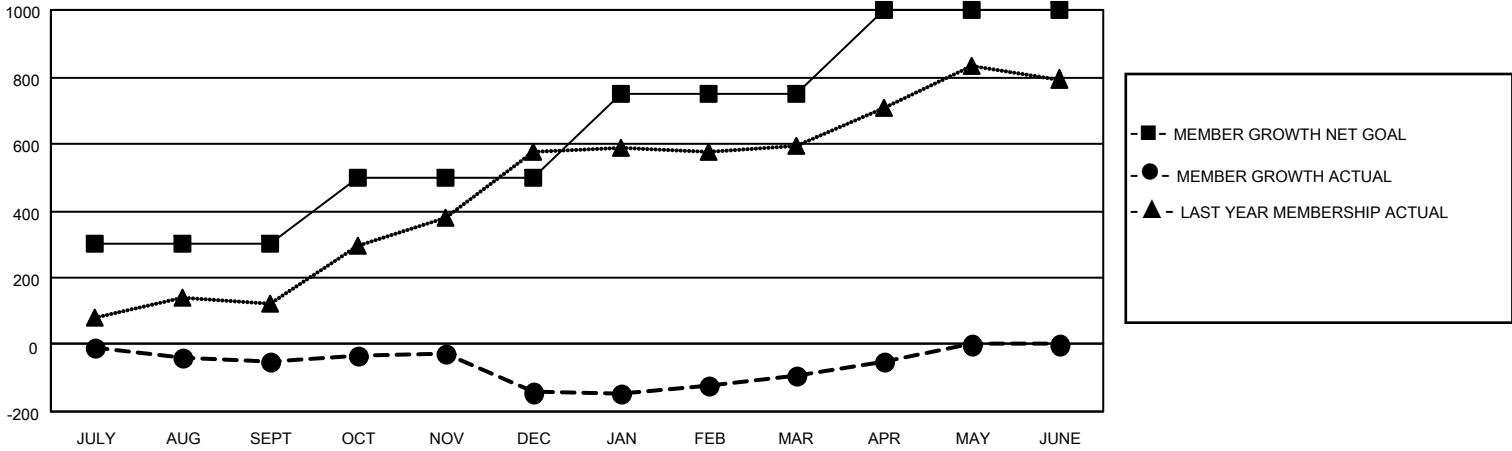
Clubs			
RESULTS FOR 2021-2022			
QUARTER	NEW CLUB GOAL	NEW CLUBS	DROPPED CLUBS
JULY/AUG/SEPT	2	0	2
OCT/NOV/DEC	2	1	3
JAN/FEB/MAR	3	0	1
APR/MAY/JUNE	3	1	0

Members			
RESULTS FOR 2021-2022			
QUARTER	MEMBER GROWTH NET GOAL	MEMBER GROWTH ACTUAL	DROPPED MEMBERS ACTUAL (including transfers)
JULY/AUG/SEPT	300	71	111
OCT/NOV/DEC	200	93	183
JAN/FEB/MAR	250	82	31
APR/MAY/JUNE	250	50	4

GOALS AND ACTUAL NEW CLUBS CUMULATIVE



GOALS AND ACTUAL MEMBERS CUMULATIVE



DROPPED CLUBS: 6	
DROPPED MEMBERS	
DECEASED	11
CLUB CANCELLED	79
OTHER	239
TOTAL	329

57 CLUBS OF 131 ADDED 1 OR MORE NEW MEMBERS

[CLICK HERE FOR CUMULATIVE MEMBERSHIP DATA](#)

<u>GENDER DISTRIBUTION</u>	
MALE	2,659 (77.79%)
FEMALE	759 (22.21%)
NON BINARY	0 (0.00%)
PREFER NOT TO ANSWER	0 (0.00%)
TOTAL FAMILY UNIT MEMBERS	1,386
FAMILY MEMBERS PAYING HALF DUES	772